



The Amazing Shrew

Winter continues to hang on in Eastern Montana as a seemingly continuous barrage of snowstorms march through the region. As humanity gets ready to emerge from its winter slumber, the amazing shrew has been designed to uniquely handle the winter months.



Shrews are small mole-like mammals and found world-wide. They have one of the highest rates of metabolism among mammals and that high rate of energy consumption would seem to be a disadvantage during the cold winter months.

But God has given these little creatures a unique way to handle winter. In the fall, the shrew's body begins to shrink including its internal organs and even its brain. This gives the shrew less body mass to heat and enables the shrew to maintain proper body temperature even when the ambient temperature drops and food becomes

scarce. Once winter's grip releases its hold, the shrew begins to grow again and reach summertime size.

To the evolutionist, this doesn't seem like a very "survival of the fittest" strategy. In fact, some have claimed that the shrew cheats evolution. But the shrew is simply designed to do what it was created to do. The shrew is a testament to the creator who made it.¹

God also uses such unorthodox creatures to confound the wise. As it says in 1 Corinthians 1:27: "But God chose what is foolish in the world to shame the wise; God chose what is weak in the world to shame the strong." And the lowly shrew does just that by pointing to the Creator and Sustainer of all things.

Our goal at the Glendive Dinosaur & Fossil Museum is to do the same by using the remains of what is in the earth due to the Flood of Noah to point the visitors to the reality of our Creator God, the effects of sin and the redemption found only in Jesus Christ.

Please visit our friends at the Institute for Creation Research (www.icr.org), for more interesting facts about God's creation.

¹Tomkins, J. P. (5/11/2022). Do shrinking shrews cheat evolution? The Institute for Creation Research. Retrieved March 17, 2023, from <https://www.icr.org/article/12107>

Museum Staff

2023 Museum Hours
10am-5pm

Friday & Saturday April & May

Monday thru Saturday.....
.....Memorial Day to Labor Day

Friday & SaturdaySept & Oct



Robert Canen
FACT President
Museum Director
robert@creationtruth.org



Tommy Lohman
FACT Vice-President
Field Paleontologist
tommy@creationtruth.org



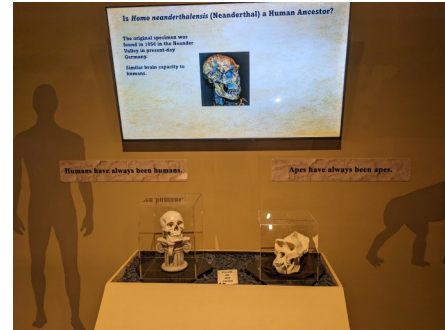
Chuck Haley
Assistant Director
chuck@creationtruth.org

Where Biblical History Comes Alive!

Museum Updates!

Come see us this season, as we've been working on several updates to our displays. We have started the expansion of our order of burial display with the hopes of being fully completed by 2024. We are also revamping our display challenging the apes to

man paradigm with a digital presentation that will highlight specimens touted as human ancestors and showing that they can be classified simply as apes, humans, or discredited attempts to bridge the gap.



Come dig with us in 2023! In addition to our full-day and half-day digs, GDFM will be hosting a week-long dinosaur dig for anyone who wants to know more about these great animals.

We will begin our week at 3pm on Monday, June 26 with a tour of our museum and conclude our week on Friday, June 30 at noon with a lunch and send off.

Our time will be spent excavating dinosaur fossils in the Glendive area, preparing fossils in our own fossil lab, and daily lectures by Tommy Lohman. The daily lectures will be a merging of both theological and scientific perspectives about dinosaurs.

The minimum age for a digger is 12 years old. The fee is \$500.00 per person and includes everything you need for digging, a GDFM t-shirt, and a lab/lecture notebook. This fee does not include travel, lodging, or food except for Tuesday and Friday lunches.

Please visit www.creationtruth.org/digs/weeklong-dig-with-gdfm/ and fill out your dig application and pay the deposit. The deposit is required to hold your spot and the final portion of your dig fee will be due the end of May.

Please reach out to Tommy Lohman (tommy@creationtruth.org) or Robert Canen (robert@creationtruth.org) if you have any questions. We hope to see you this summer!

Donations:

FACT is supported through museum admissions, gift shop sales, digs, and donations.

To **donate by check**, please mail to the address on the right.

To **donate by credit card**, please visit our website and click on the donate banner or give us a call.

Thank you for your support!

Foundation Advancing Creation Truth

PO Box 684

Glendive, MT 59330

406-377-3228

robert@creationtruth.org

Visit us at
www.creationtruth.org